

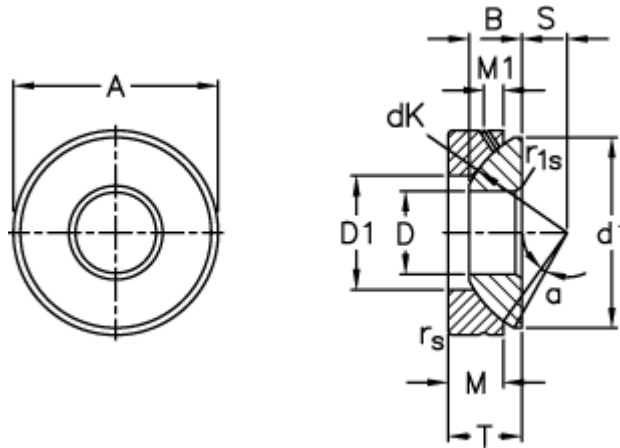
Data Sheet



Article number: 03511100

Description: Fluro Rod end GE 100AX

Measures



A	= 210 0 -0,030	M1	= 15
B	= 51	rs, r1s min	= 1.1
D	= 100 0 -0,020	S	= 45
d1 max	= 198	Static axial load C0 (kN)	= 6000
D1 min	= 127	T	= 59 +0,25 -0,60
dK	= 222	Tilt angle	= 4
Dynamic axial load C (kN)	= 1200	Weight	= 10900
M	= 46		